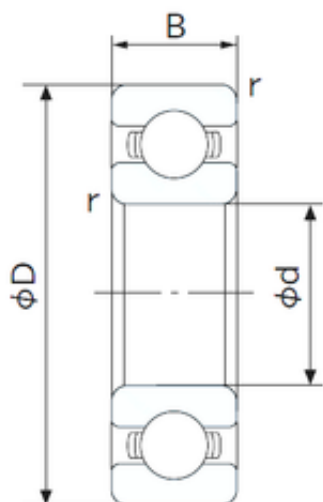




BEARING Driveshaft do Brasil



SKF Distributor Supply Auto Parts Ball Bearing
SKF NSK NACHI Timken Koyo OEM 6203 6204
6205 6208 6209 6306 Deep Groove Ball Bearing in
Stock

Bearing No. 6203

| | |
|----------------------------------|--------------------------|
| Size | 17x40x12 mm |
| Bore Diameter | 17 mm |
| Outer Diameter | 40 mm |
| Width | 12 mm |
| d | 17 mm |
| D | 40 mm |
| B | 12 mm |
| C | 12 mm |
| r min. | 0.6 mm |
| da min. | 22 mm |
| Da max. | 35 mm |
| ra max. | 0.6 mm |
| Weight | 0.065 Kg |
| Basic dynamic load rating (C) | 9,55 kN |
| Basic static load rating (C0) | 4,8 kN |
| (Grease) Lubrication Speed | 17000 r/min |
| Category | Single Row Ball Bearings |
| Inventory | 0.0 |
| Manufacturer Name | NACHI |
| Minimum Buy Quantity | N/A |
| Weight / Kilogram | 0 |
| Product Group | B00308 |
| Enclosure | Open |
| | |

6203 Bearing 2D drawings and 3D CAD models



BEARING Driveshaft do Brasil

| | |
|---------------------------------|---|
| Precision Class | ABEC 1 ISO P0 |
| Maximum Capacity / Filling Slot | No |
| Rolling Element | Ball Bearing |
| Snap Ring | No |
| Internal Special Features | No |
| Cage Material | Steel |
| Internal Clearance | C0-Medium |
| Inch - Metric | Metric |
| Long Description | 17MM Bore; 40MM Outside Diameter; 12MM Outer Race Width; Open; Ball Bearing; ABEC 1 ISO P0; No Filling Slot; No Snap Ring; No Internal Special Features; C0-Medium Internal Clearance; Steel Cage |
| Other Features | Deep Groove |
| Category | Single Row Ball Bearing |
| UNSPSC | 31171504 |
| Harmonized Tariff Code | 8482.10.50.68 |
| Noun | Bearing |
| Keyword String | Ball |
| Manufacturer URL | http://www.nachiamerica.com |
| Weight / LBS | 0.146 |
| Outer Race Width | 0.472 Inch 12 Millimeter |
| Outside Diameter | 1.575 Inch 40 Millimeter |
| Inner Race Width | 0 Inch 0 Millimeter |
| Bore | 0.669 Inch 17 Millimeter |
| Bore Type | Cylindrical Bore |
| Configuration | Single Row |
| Bore Size | 17 mm |
| Width | 12 mm |
| | |



BEARING Driveshaft do Brasil

| | |
|-------------------------|-------------------|
| Fillet Radius/Chamfer | 0.6 mm |
| Dynamic Load Rating | 9,550 N |
| Static Load Rating | 4,800 N |
| Limiting Speed - Grease | 18,000 rpm |
| Limiting Speed - Oil | 21,000 rpm |
| Factor fo | 13.1 |
| Radial Clearance | 0.003 to 0.018 mm |
| da (min) | 22 mm |
| Da (max) | 35 mm |
| ra (max) | 0.6 mm |